



LEASING OFFICE CLOSED JANUARY 1ST
 OFFICE AND AFTER HOURS
 EMERGENCY NUMBER
303-404-1560
 AND FOLLOW THE PROMPTS



OUR TEAM

COMMUNITY MANAGER
PYE BARRIOS
LEASING CONSULTANTS
TORI WILLIAMS
BLANCA SEGOVIA
MAINTENANCE SUPERVISOR
MARTIN TORRES
MAINTENANCE TECHS
SCOTT BLACKWELL



STOP BY THE LEASING OFFICE ON JANUARY 17TH, 2024, FROM 3PM - 6PM, IN YOUR FAVORITE (APPROPRIATE) PAJAMAS, AND JOIN US FOR SOME FUN AND PIZZA!!!

PAY RENT ONLINE

CONTACT THE LEASING OFFICE IF YOU NEED YOUR ACCOUNT NUMBER.



LATE FEE POLICY

RENT IS DUE ON THE FIRST OF THE MONTH. LATE FEES ARE 5%.



CONSULT YOUR LEASE FOR MORE DETAILS.

RESIDENT REFERRAL

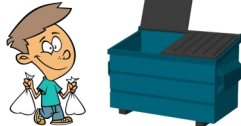
REFER A FRIEND TO LIVE AT THE WALNUT CREEK APARTMENTS AND RECEIVE \$100.⁰⁰ OFF A FUTURE MONTH OF RENT!

EARLY BIRD

PAY YOUR RENT EARLY, BY THE 26TH OF THE MONTH, TO BE ENTERED FOR A CHANCE TO WIN \$50.⁰⁰ OFF THE FOLLOWING MONTH'S RENT! ONE WINNER WILL BE DRAWN AND CALLED EACH MONTH.

TRASH

PLEASE ENSURE YOUR TRASH MAKES IT TO THE DUMPSTER. PLEASE DO NOT LEAVE TRASH IN FRONT OF YOUR DOOR!



SMOKE DETECTORS

IF YOUR SMOKE DETECTOR BEGINS TO "CHIRP", PLEASE CALL THE LEASING OFFICE AND MAINTENANCE WILL REPLACE THE BATTERY. DO NOT DISCONNECT OR DAMAGE THE DETECTORS.

KEEP IT SLOW

PLEASE BE MINDFUL OF YOUR SPEED AND KEEP IT SLOW WHILE IN THE COMPLEX.



PETS AND SERVICE ANIMALS

ALL PETS, INCLUDING ESA - EMOTIONAL SUPPORT/SERVICE ANIMALS, NEED PROOF OF VACCINES. LEASH AND CLEAN UP AFTER YOUR ANIMAL.

NO SPACE HEATERS ALLOWED - DANGEROUS - LEGAL DEMAND

SPACE HEATERS ARE ONE OF THE LEADING CAUSES OF HOME FIRES. EVEN ELECTRIC HEATERS WITH AN AUTOMATIC SHUT OFF CAN CAUSE A FIRE.

FOR THE SAFETY OF THE ENTIRE COMMUNITY SPACE HEATERS OF ANY KIND ARE NOT ALLOWED. SHOULD WE FIND A SPACE HEATER IN YOUR HOME YOU WILL RECEIVE A LEGAL DEMAND. SECOND OFFENSE COULD LEAD TO POSSIBLE EVICTION. NO EXCEPTIONS WILL BE TOLERATED!

THANK YOU FOR HELPING US KEEP OUR COMMUNITY SAFE FOR THE ENJOYMENT OF ALL OUR RESIDENTS!

COLD WEATHER TIPS

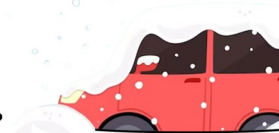
WE RECOMMEND YOU KEEP YOUR HEAT SET AT 62° F, OR HIGHER, DURING ANY TEMPERATURES IN THE LOW TEENS, SINGLE

DIGITS, OR BELOW FREEZING. PLEASE DO NOT TURN OFF YOUR HEAT IF YOU PLAN ON LEAVING FOR A DAY, OR SEVERAL DAYS.

DURING COLD TEMPERATURES, IT IS A GOOD IDEA TO KEEP THE CABINETS UNDERNEATH THE BATHROOM SINKS AND KITCHEN SINKS OPEN A CRACK TO ALLOW HEAT TO FLOW TO KEEP PIPES WARM. IN THE EVENT YOU TURN ON THE WATER, BUT IT DOES NOT RUN, THEN CALL US IMMEDIATELY.

FOR AFTER HOURS CALL OUR EMERGENCY PHONE AT 303-404-1560 AND FOLLOW THE PROMPTS TO BE DIRECTED TO OUR AFTER-HOURS EMERGENCY SERVICE. ONE OF OUR STAFF MEMBERS WILL RESPOND. DO NOT LEAVE FIREPLACES OPERATING UNATTENDED AND CANDLES ARE NOT ALLOWED. USE ELECTRIC CANDLES.

PARKING



PLEASE DO NOT PARK LIKE THIS



PLEASE DO NOT PARK IN AREAS THAT WILL IMPEDE SNOW REMOVAL. YOU COULD BE TOWED, WITHOUT NOTICE, AT OWNER'S EXPENSE.

LINGUISTICS

S S U B J U N C T I V E Z U G
 P L Y B P A R T I C I P L E E
 R H A N E V I X E L F E R E N
 E A D E T C E L F N I U V V I
 P E V I T A N I M O N I F I T
 O Q F N T E X X C D T V L T I
 S D C U K K S L A A R O A A V
 I E Q F T O A T G A A C R R E
 T C E J B U S O A C N A T E V
 I L X B S F R P V T S T I P I
 O A K E I R J E E I I C M S
 N R T N E S E R P V T V L I S
 N A I T D A T I V E I E E O E
 D T N A N O S T B H V S B Y S
 E I N D I C A T I V E J S T S
 R V O B G A P H O N E M E A O
 F E V I T A S U C C A M H K P
 L P R E D I C A T E Q Y R U N

EVERY WORD LISTED IS CONTAINED WITHIN THE GROUP OF LETTERS. WORDS CAN BE FOUND IN A STRAIGHT LINE HORIZONTALLY, VERTICALLY, OR DIAGONALLY. THEY MAY BE READ EITHER FORWARD OR BACKWARD.

- | | |
|---------------|-------------|
| ACCUSATIVE | OBJECT |
| ACTIVE | PARTICLE |
| ARTICLE | PASSIVE |
| CLAUSE | PAST |
| DATIVE | PHONEME |
| DECLARATIVE | POSSESSIVE |
| FINITE | PREDICATE |
| FUTURE | PREPOSITION |
| GENITIVE | PRESENT |
| GERUND | REFLEXIVE |
| IMPERATIVE | SONANT |
| INDICATIVE | STATIVE |
| INFLECTED | SUBJECT |
| INTERROGATIVE | SUBJUNCTIVE |
| INTRANSITIVE | SYNTAX |
| NOMINATIVE | VOCATIVE |

SUN	MON	TUE	WED	THU	FRI	SAT
			1 <i>Office Closed</i>	2	3	4
5	6	7	8	9	10	11
12	13	14	15	16	17	18
19	20	21	22	23	24	25
26	27	28	29	30	31	



WILD WEATHER FACTS

- ALL WEATHER OCCURS WITHIN EIGHT MILES OF EARTH'S SURFACE.
- ALL SNOWFLAKES HAVE SIX SIDES OR POINTS.
- THE WORLD'S GREATEST 24-HOUR RAINFALL RECORD WAS SET IN JANUARY 1966 ON THE FRENCH ISLAND OF REUNION IN THE INDIAN OCEAN.
A RECORD 71.8 INCHES OF RAIN FELL
- TROPICAL STORMS ROTATE CLOCKWISE SOUTH OF THE EQUATOR AND COUNTERCLOCKWISE IN THE NORTHERN HEMISPHERE.
- A HURRICANE IS GIVEN A RATING ON THE SAFFIR-SIMPSON SCALE BASED ON ITS SUSTAINED WIND SPEED.
- THE ENHANCED FUJITA SCALE (EF-SCALE) IS A SYSTEM FOR CLASSIFYING TORNADO INTENSITY.
- WATERSPOUTS ARE TORNADOLIKE ROTATING COLUMNS OF AIR OVER WATER.
- A TROPICAL STORM MUST HAVE WINDS OF 74 MILES PER HOUR OR GREATER TO BE CLASSIFIED A HURRICANE.
- TORNADOES HAVE BEEN REPORTED ON ALL CONTINENTS EXCEPT ANTARCTICA.
- CONTRARY TO POPULAR BELIEF, TORNADOES CAN, AND DO, HIT DOWNTOWN AREAS OF MAJOR CITIES.
THE CITY CENTER OF ST. LOUIS, MISSOURI, HAS BEEN FLATTENED FOUR TIMES SINCE 1871.
- ALL THUNDERSTORMS PRODUCE LIGHTNING, WHICH IS WHAT MAKES THE SOUND OF THUNDER.
- THE WORLD'S HEAVIEST HAILSTONES WEIGHED UP TO TWO POUNDS EACH AND KILLED 92 PEOPLE IN GOPALGANJ DISTRICT, BANGLADESH, ON APRIL 14, 1986.
- THE UNITED STATES HAS MORE TORNADOES THAN ANY OTHER COUNTRY.
- THE GREAT BLIZZARD OF 1888 BLANKETED SOME AREAS OF THE ATLANTIC COAST WITH AS MUCH AS 50 INCHES OF SNOW.
- WATERSPOUTS CAN MAKE SEA CREATURES RAIN DOWN FROM THE SKY.
- THE EYE OF A HURRICANE IS CALM, BUT THE EYE WALL THAT SURROUNDS IT HAS THE STRONGEST, MOST VIOLENT WINDS.
- SNOWFLAKES FORMED IN CLOUDS TAKE ABOUT AN HOUR TO REACH THE GROUND.
- HURRICANES, TROPICAL CYCLONES, AND TYPHOONS ALL DESCRIBE THE SAME TYPE OF STORM-WHAT THEY'RE CALLED DEPENDS ON WHERE THEY FORM.
- WHEN LIGHTNING STRIKES, THE HEATED AIR CREATES A SONIC SHOCK WAVE, WHICH IS THE SOUND OF THUNDER.
- WE SEE LIGHTNING BEFORE WE HEAR THUNDER BECAUSE LIGHT TRAVELS MUCH FASTER THAN SOUND.
- THE TOP SPEED OF A FALLING RAINDROP IS 18 MILES PER HOUR.
- CRICKETS MAKE GOOD THERMOMETERS TO GET A

FAVORITE PIZZA TOPPINGS FROM 10 COUNTRIES

- INDIA** - PICKLED GINGER, MINCED MUTTON, AND PANEER (A FORM OF COTTAGE CHEESE)
- RUSSIA** - MOCKBA (A COMBINATION OF SARDINES, TUNA, MACKEREL, SALMON, AND ONIONS), RED HERRING
- BRAZIL** - GREEN PEAS
- JAPAN** - EEL, SQUID, AND MAYO JAGA (MAYONNAISE, POTATO, BACON)

- FRANCE** - FLAMBE (BACON, ONION, FRESH CREAM)
- PAKISTAN** - CURRY
- AUSTRALIA** - SHRIMP, PINEAPPLE, BARBECUE SAUCE
- COSTA RICA** - COCONUT
- NETHERLANDS** - "DOUBLE DUTCH"—DOUBLE MEAT, DOUBLE CHEESE, DOUBLE ONION
- UNITED STATES** - PEPPERONI, MUSHROOMS, SAUSAGE, GREEN PEPPER, ONION, AND EXTRA CHEESE

SLOPPY JOE CASSEROLE



YIELDS:
6 - 8 SERVINGS
PREP TIME:
10 MINS
TOTAL TIME:
35 MINS

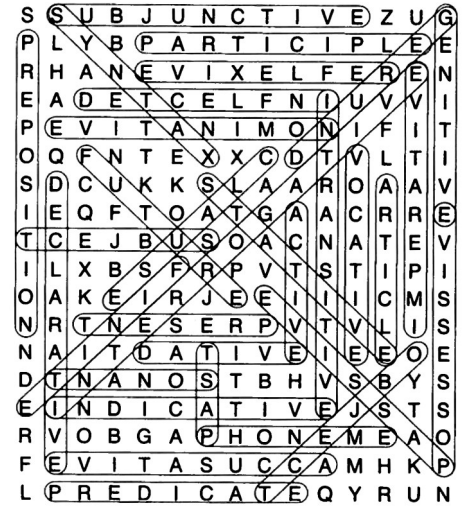
INGREDIENTS

- 4 TBSP. BUTTER, DIVIDED
- 2 LARGE CARROTS, PEELLED AND GRATED
- 1/2 ONION, DICED
- 1 GREEN BELL PEPPER
- 5 CLOVES GARLIC, MINCED
- 2 1/2 LB. GROUND BEEF
- 1 1/2 C. KETCHUP
- 2 TBSP. BROWN SUGAR
- 2 TSP. CHILI POWDER
- 1 TSP. DRY MUSTARD
- 2 C. BEEF STOCK
- 2 TBSP. TOMATO PASTE
- 2 TBSP. WORCESTERSHIRE SAUCE
- 1 1/2 TSP. SALT
- 1/2 TSP. GROUND BLACK PEPPER
- HOT SAUCE, OPTIONAL
- 12 SLIDER ROLLS, FROM 1, 12-16OZ. PACKAGE
- 1 TSP. EVERYTHING BAGEL SEASONING, OR SESAME SEEDS

DIRECTIONS

1. PREHEAT THE OVEN TO 375 DEGREES.
2. PLACE 2 TABLESPOONS OF BUTTER IN A LARGE SKILLET AND PLACE OVER MEDIUM HEAT. ONCE THE BUTTER HAS MELTED, ADD THE CARROT, ONION AND GREEN BELL PEPPER AND COOK UNTIL SLIGHTLY SOFTENED, ABOUT 4 MINUTES. ADD THE GARLIC AND COOK 1 MORE MINUTE. ADD THE GROUND BEEF, BREAKING UP INTO LITTLE PIECES WITH A WOODEN SPOON, AND COOK UNTIL NO PINK PIECES REMAIN, 5-7 MINUTES. IF A LOT OF LIQUID OR FAT REMAIN IN THE SKILLET, DRAIN MOST AND DISCARD.
3. ADD THE KETCHUP, BROWN SUGAR, CHILI POWDER, DRY MUSTARD, BEEF STOCK, TOMATO PASTE, WORCESTERSHIRE SAUCE, SALT AND PEPPER. STIR TO COMBINE AND SIMMER FOR 3-5 MINUTES. ADD HOT SAUCE IF DESIRED. TRANSFER THE MIXTURE TO A 9-BY -13-INCH CASSEROLE DISH.
4. MELT THE REMAINING 2 TABLESPOONS OF BUTTER. NESTLE THE SLIDER ROLLS (TOPS AND BOTTOMS TOGETHER) INTO THE SLOPPY JOE MIXTURE AND BRUSH ALL OVER WITH THE MELTED BUTTER. SPRINKLE THE TOPS ALL OVER WITH EVERYTHING BAGEL SEASONING OR SESAME SEEDS. BAKE FOR 8-10 MINUTES UNTIL THE TOPS OF THE BUNS ARE TOASTY. SERVE IN SERVING BOWLS IMMEDIATELY.

WORD SEARCH SOLUTION



PIZZA STUFF



- ANTICA PIZZERIA PORT'ALBA, IN NAPLES, ITALY, IS BELIEVED TO BE THE WORLD'S FIRST PIZZERIA. FIRST ESTABLISHED AS A STAND IN 1738, THE RESTAURANT OPENED IN 1830.
- ITALIAN PIZZA WAS ORIGINALLY SQUARE-SHAPED (TODAY, WE CALL THIS "SICILIAN CUT"). IT ALSO USED ROMANO CHEESE BEFORE SWITCHING TO MOZZARELLA.
- THE FIRST PIZZERIA IN THE UNITED STATES WAS OPENED BY GENNARO LOMBARDI IN 1895 IN NEW YORK CITY.
- AMERICANS CONSUME MORE THAN 251 MILLION POUNDS OF PEPPERONI ANNUALLY.
- THE HAWAIIAN PIZZA, TOPPED WITH PINEAPPLE AND HAM, WAS INVENTED IN 1962 BY RESTAURATEUR SAM PANOPOULOS IN CANADA.
- HELD ANNUALLY IN LAS VEGAS, THE PIZZA EXPO IS THE LARGEST PIZZA-ONLY TRADE SHOW.
- CHICAGO DEEP DISH PIZZA PUTS THE SAUCE ON TOP OF THE CHEESE.
- OCTOBER IS OFFICIALLY DESIGNATED NATIONAL PIZZA MONTH IN THE UNITED STATES.
- PHILADELPHIA'S PIZZA BRAIN IS HALF RESTAURANT, HALF MUSEUM. IT OFFERS A LARGE COLLECTION OF PIZZA-RELATED ITEMS AND PIZZA VARIETIES FROM AROUND THE WORLD.
- APPROXIMATELY THREE BILLION PIZZAS ARE SOLD IN THE UNITED STATES EVERY YEAR, PLUS AN ADDITIONAL ONE BILLION FROZEN PIZZAS.
- THE CELENTANO BROTHERS INVENTED THE FROZEN PIZZA IN 1957.

